

RedBuilt™ Parapet Design Solutions.

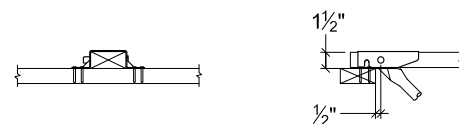
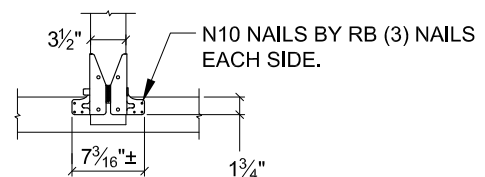
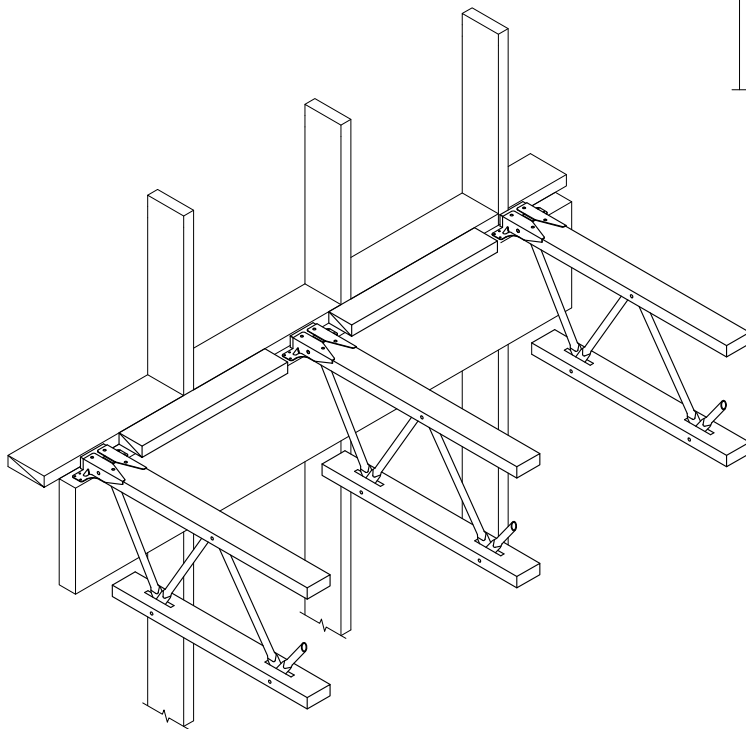
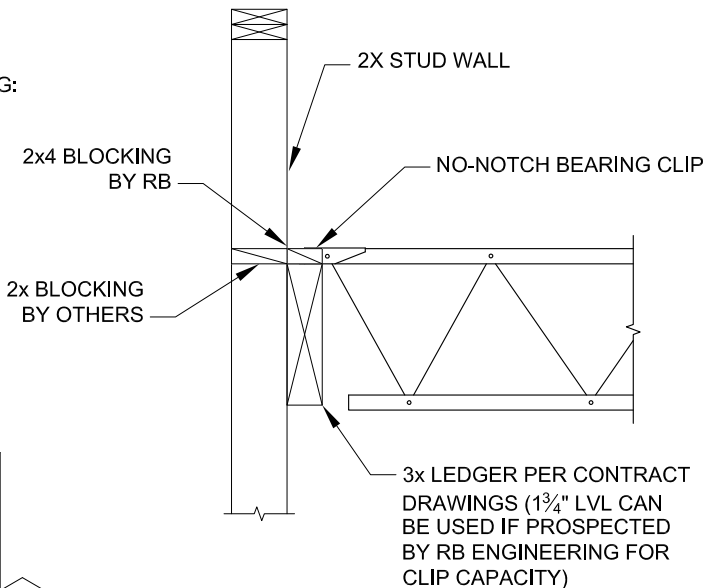
Following are RedBuilt's recommended solutions for constructing parapets without kickers.

Balloon Framing

Balloon framing is RedBuilt's preferred method of construction due to safety, installation, and performance advantages.

ADVANTAGES COMPARED TO PLATFORM FRAMING:

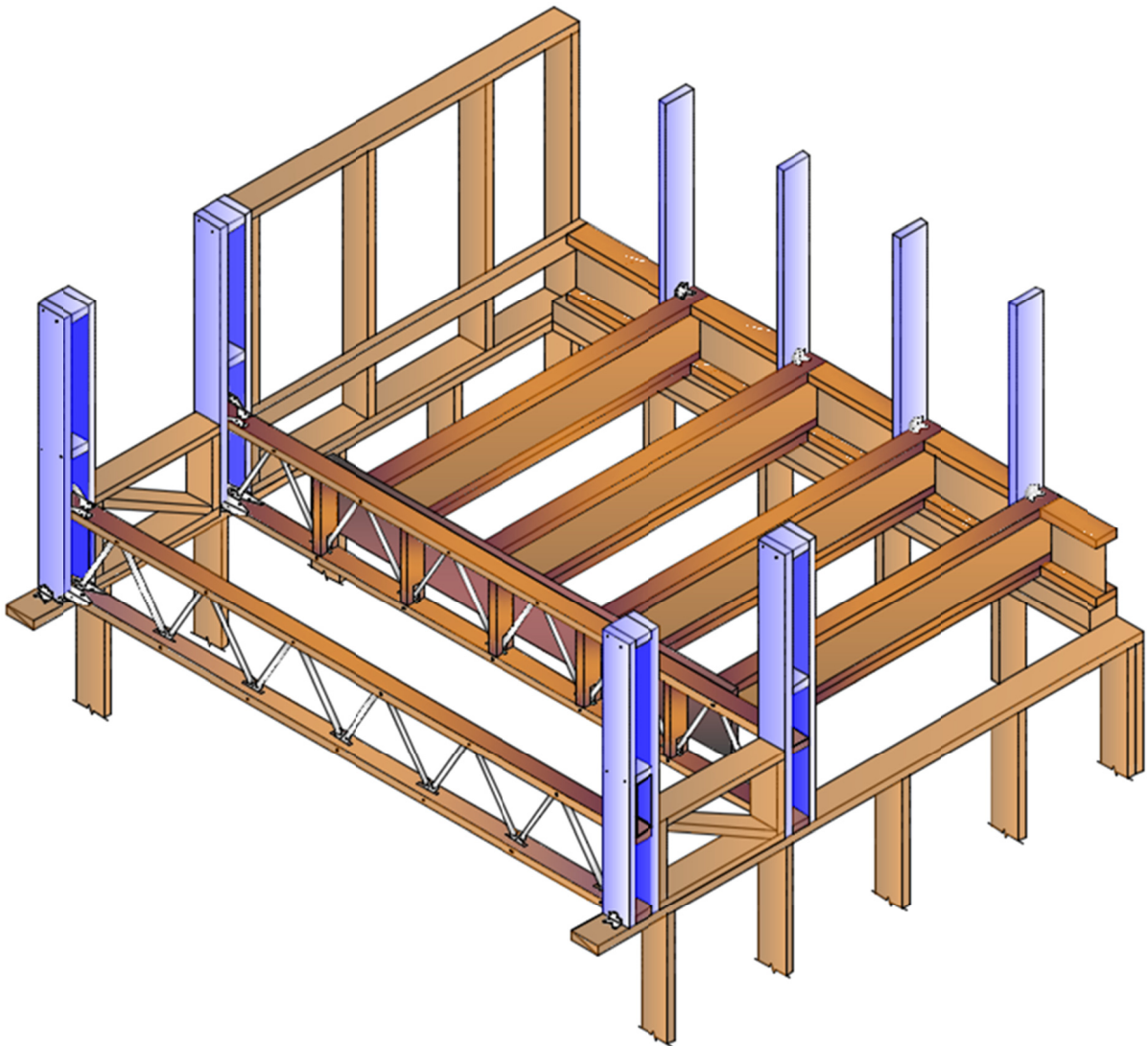
- WALL ASSEMBLY IS FAST AND CAN BE DONE PRIOR TO TILTING WALLS
- WALL LOADS ABOVE AND BELOW TRUSS ARE TRANSFERED INTO DIAPHRAM THROUGH LEDGER / EDGE NAILING
- ALL WALL SIZES SUPPORTED, INCLUDING STEEL STUDS
- STRAIGHT FORWARD NON-BEARING / SIDE WALL SOLUTIONS



RED-L "NO-NOTCH" CLIP
TOP CHORD BEARING

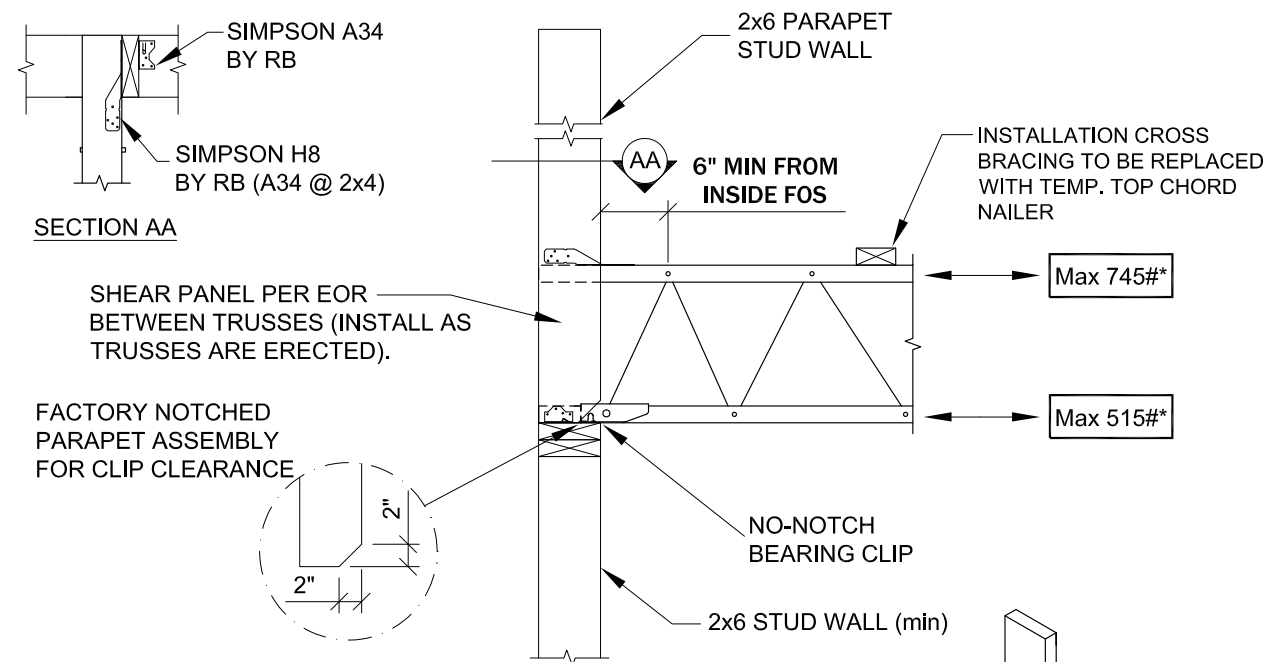
Alternate Solutions

Where other solutions are required, RedBuilt™ has developed details that can be easily incorporated into the building design. Details for these solutions are included in the following pages.

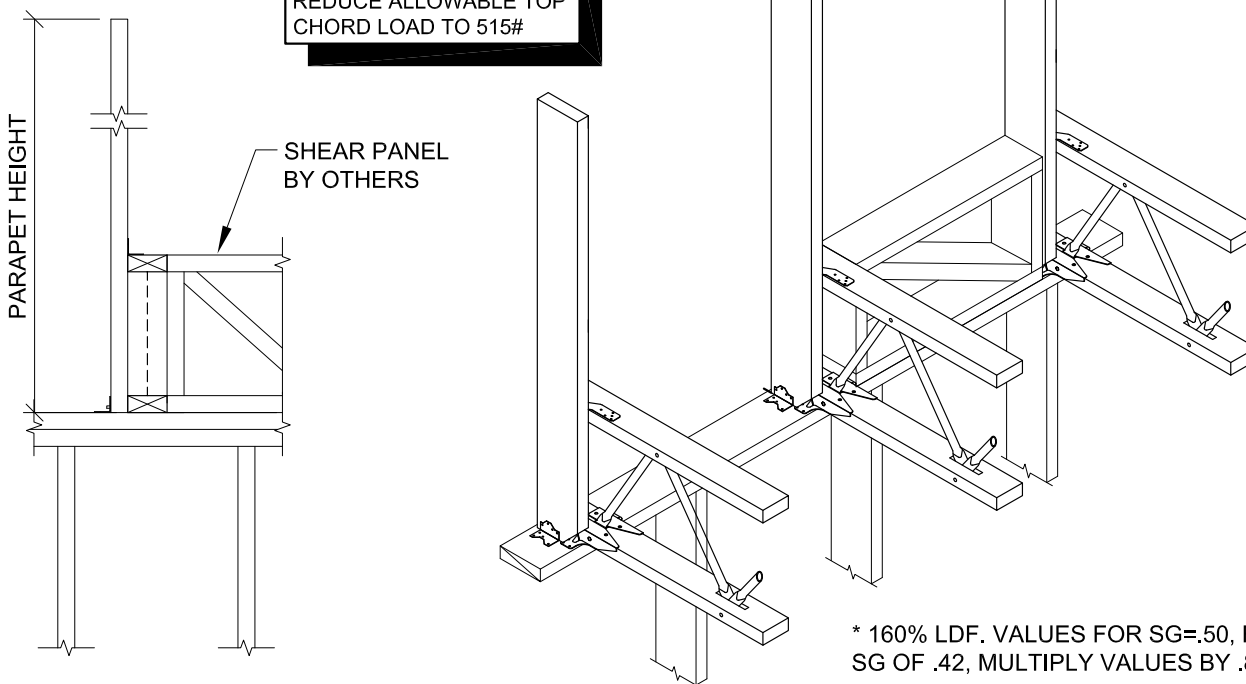


Single Leg Parapet Assembly for Red-L™ and RED-W™ Open-Web Trusses

- Parapets for conventional framing are supplied with the hardware pre-attached.

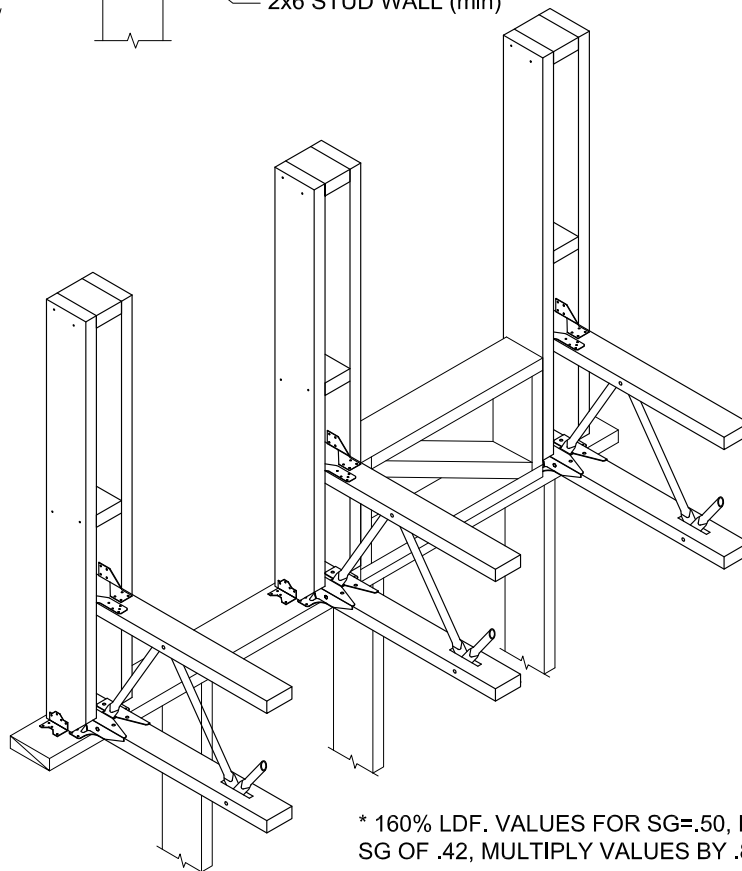
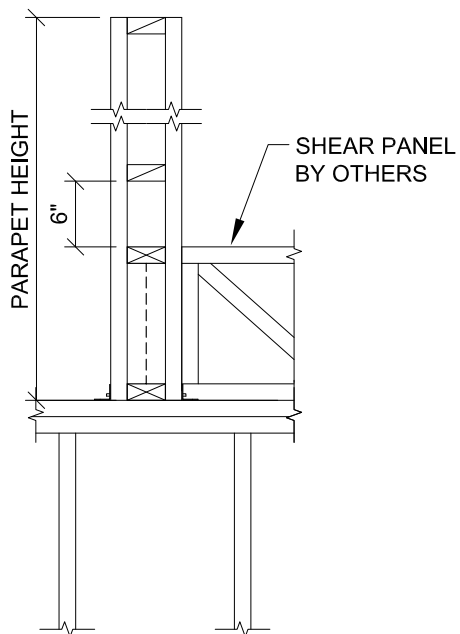
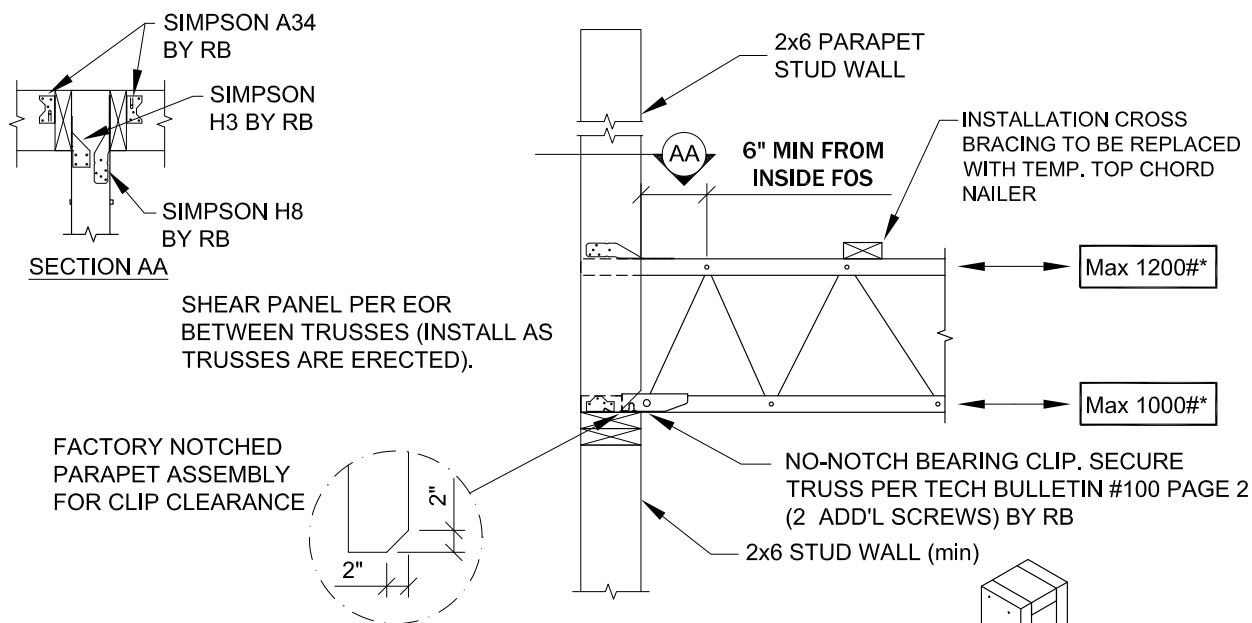


FOR 2x4 PARAPET WALLS, USE A34 IN LIEU OF H8 AND REDUCE ALLOWABLE TOP CHORD LOAD TO 515#



Double Leg Parapet Assembly for Red-L™ and Red-W™ Open-Web Trusses

- Parapets are supplied as an assembly that slips over the truss.
- Attachment takes less than a minute with a positive placement nail gun.
- The double leg allows for larger loads to be transferred into the top and bottom chords.



* 160% LDF. VALUES FOR SG=.50, FOR SG OF .42, MULTIPLY VALUES BY .86

Single Leg Parapet Assembly for Red-I™ Joists

- Ideal for finishing ends of buildings when used with Open Web systems.

