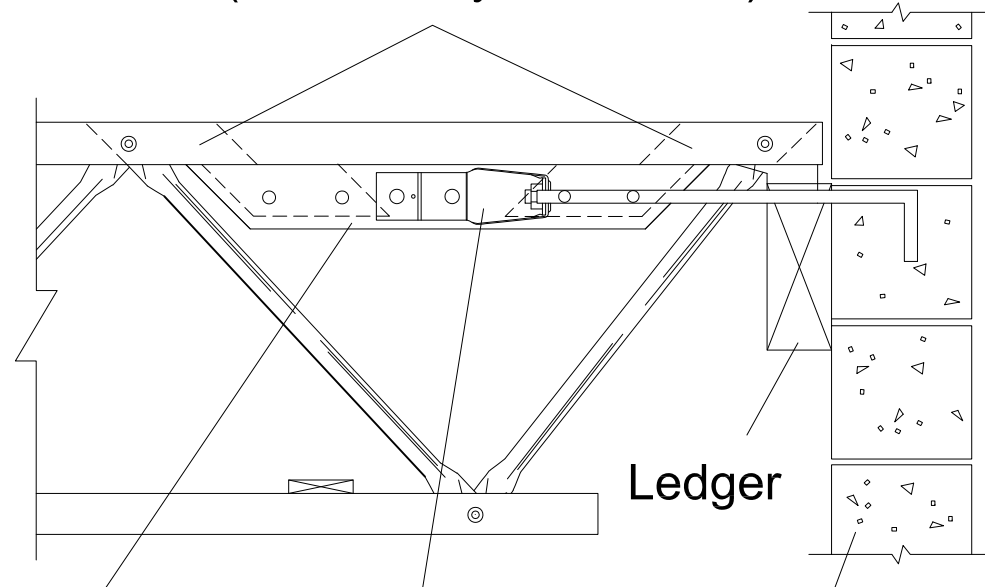


60 RED-S™ Truss with Steel Connector

Pre-manufactured steel connectors
(attached by RedBuilt™)



1½"x3½" LSL each side, with
four ¾" bolts
(attached by RedBuilt™)

HD5B (by others) each side, connected
to LSL with two ¾" bolts

Ledger

Concrete or CMU wall

Truss assembly tension capacity is 6,875 lbs at 133% or 160%. Minimum truss depth is 18" and maximum slope is ½" in 12. (Wall and anchorage design by others.)