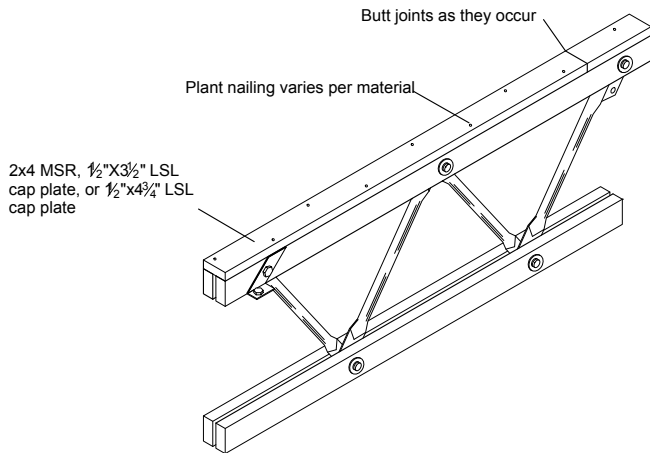


## RedBuilt Open-Web Truss with Cap Plate

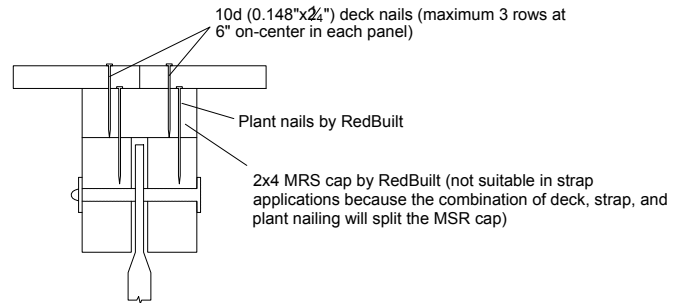
Cap plates provide the following functions:

- Transfer seismic/wind Strap loads (TimberStrand LSL cap plate only).
- Enhance diaphragm nailing capabilities.
- Provide diaphragm shear transfer at continuous panel joints (required at all high shear diaphragms).
- Eliminate interference between subpurlins and truss pins in panelized roof systems.
- Required to provide adequate attachment base for structural insulated panels (SIPs) or Tectum deck applications.



When uplift on cap plate-to-truss connection exceeds 104 plf, contact your RedBuilt representative

## Swan Lumber Cap Plate



For diaphragm nails, use 2 1/4" max. length deck nails to eliminate nail-spacing limitations with truss chords

## LSL Cap Plate(Suitable for straps. See page 25.)

