

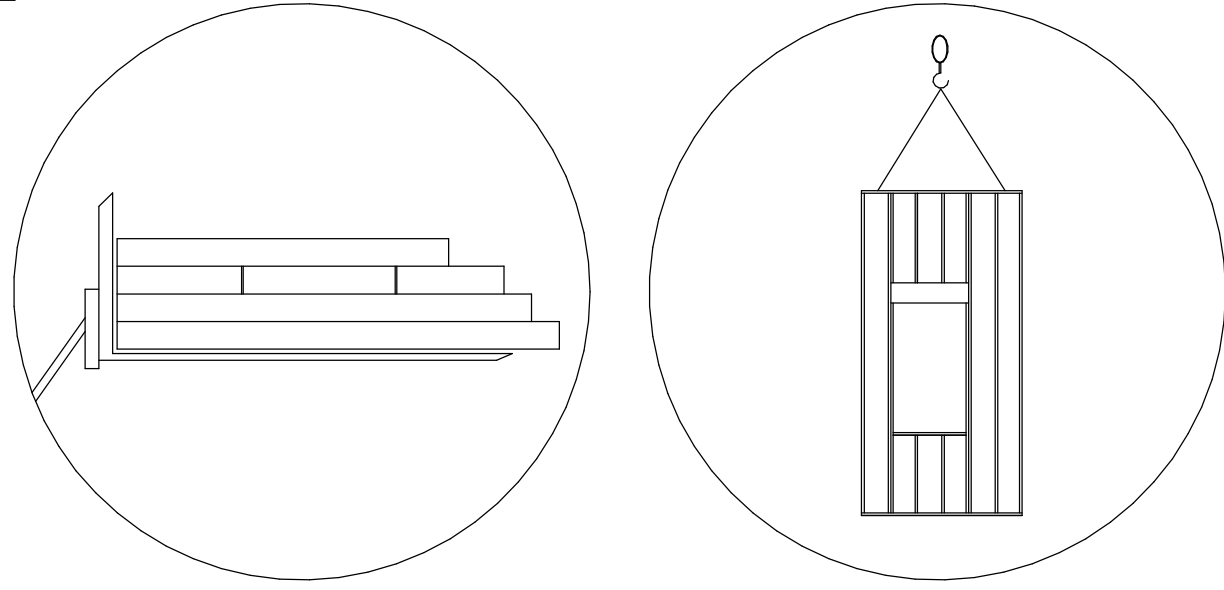
# PANELIZED WALL INSTALLATION INFORMATION

## ATTENTION BUILDER

Enclosed is **IMPORTANT** information on how to safely and properly install RedBuilt™ Joists. Personal injury or death may result from failure to read and follow this information.



### 1 PRODUCT HANDLING



**WARNING**  
Workers should stay clear when cutting the banding to avoid possible injury from flying banding or toppling panels.

- Do NOT dump or drop walls from truck.
- Always lift bundles and panels from at least two points.
- Do NOT damage wall panels with fork lifts or any lifting equipment used to move or set panels.

**CAUTION**  
Avoid bending panels out of plane

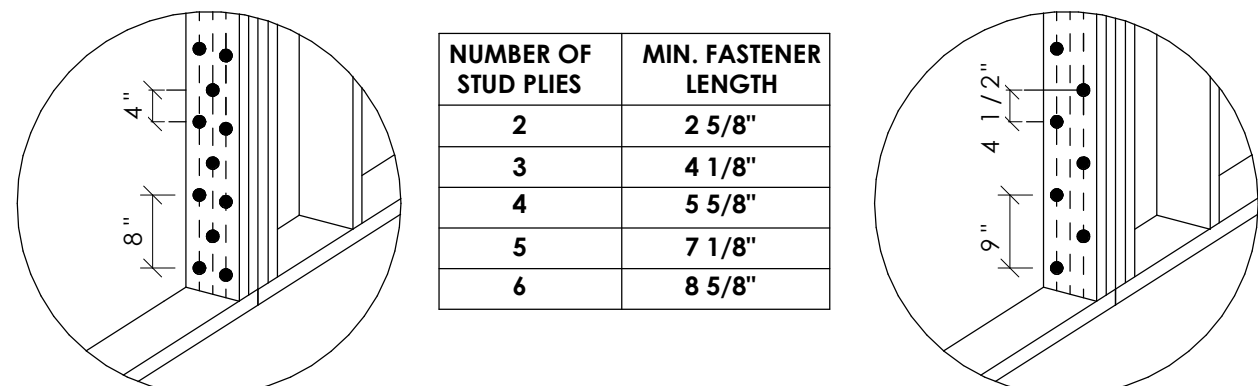
**SEE DETAILS 11, 12, & 13/R005 FOR LIFTING METHOD DETAILS AND MORE INFORMATION**

### 2 INSTALLATION TOLERANCES

- Floor & foundation dimensions must be accurate within  $\pm 1/4"$  of plan dimensions.
- Walls must be installed within  $\pm 1/4"$  of plan dimensions.
- Vertical alignment must be within  $\pm 1/8"$  of plumb.
- Wall panels will typically be undersized by  $1/8"$  to prevent long runs of walls from "growing".

### 3 WOOD PANEL ATTACHMENT

- Use nails to attach panels together using 3 evenly spaced rows of 0.131" nails every 8", staggering rows down the stud. If more than 2 ply, screws are required for connection.
- Use screws to attach panels together using 2 evenly spaced rows of 1/4" SDS screws every 9", staggering rows down the stud.

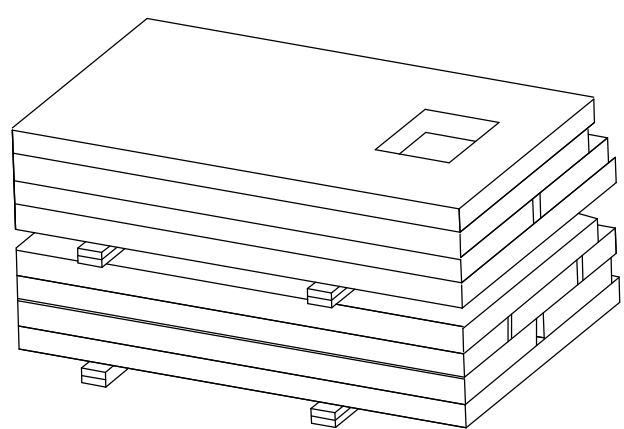


PANEL TO PANEL WITH NAILS

PANEL TO PANEL WITH SCREWS

NUMBER OF STUD PLIES	MIN. FASTENER LENGTH
2	2 5/8"
3	4 1/8"
4	5 5/8"
5	7 1/8"
6	8 5/8"

### 4 PRODUCT STORAGE

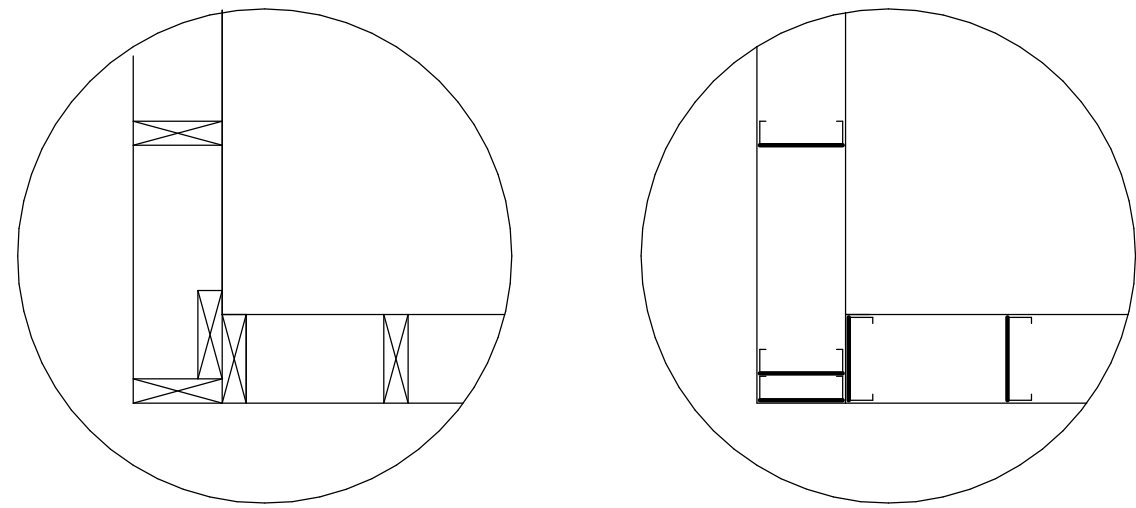


**WARNING**  
Wall panel bundles may be unstable or slippery. Do not walk on panels.

- Limit stacking to two bundles in height maximum.
- Use support blocks at 10' on-center maximum to keep products out of mud and water.
- Extend support blocks past end studs of wall panels.
- Align support blocks vertically.
- Protect products from sun and water when exposed extended amounts of time. Extended exposure can promote wood shrinking, swelling, and /or mold growth.
- Temporary banding material is to be discarded after delivery and may not be used for lifting, installing, or bracing of panels.

### 5 CORNER STUDS

- Wall panel corners will be designed minimum 3 studs unless noted otherwise.
- See section 3 & 8 for how to attach panels.



### 6 GENERAL INFORMATION

- All nails specified in framing package to be per IBC table 2304.10.1
- Do NOT scale drawings: written dimensions take precedence.
- Wall panels are drawn and fabricated to the engineer of record's specifications.

All materials shall be supplied by others, unless specifically noted as "by RB" or "by RedBuilt™" herein.

Abbreviation	Term	Abbreviation	Term
AFP	Approved for Production	FOSH	Face of Sheathing
AOR	Architect of Record	GC	General Contractor
C/L	Centerline	LVL	Laminated Veneer Lumber
DBL	Double	OFA	Out for Approval
EOR	Engineer of Record	OW	Open-Web Trusses by RedBuilt™
FOS	Face of Stud	RB	RedBuilt™

### 7 INSTALLATION BRACING

#### BRACE ALL PANELS IN ACCORDANCE WITH EOR SPECIFICATIONS

**Notice**  
Installation bracing requirements and procedures, as well as worker safety, are the responsibility of the installer. The installer shall make sure that proper bracing information is understood by all persons involved in the panel installation.

**WARNING**  
Without correct installation bracing, walls can become unstable causing death, serious personal injury, or property damage.

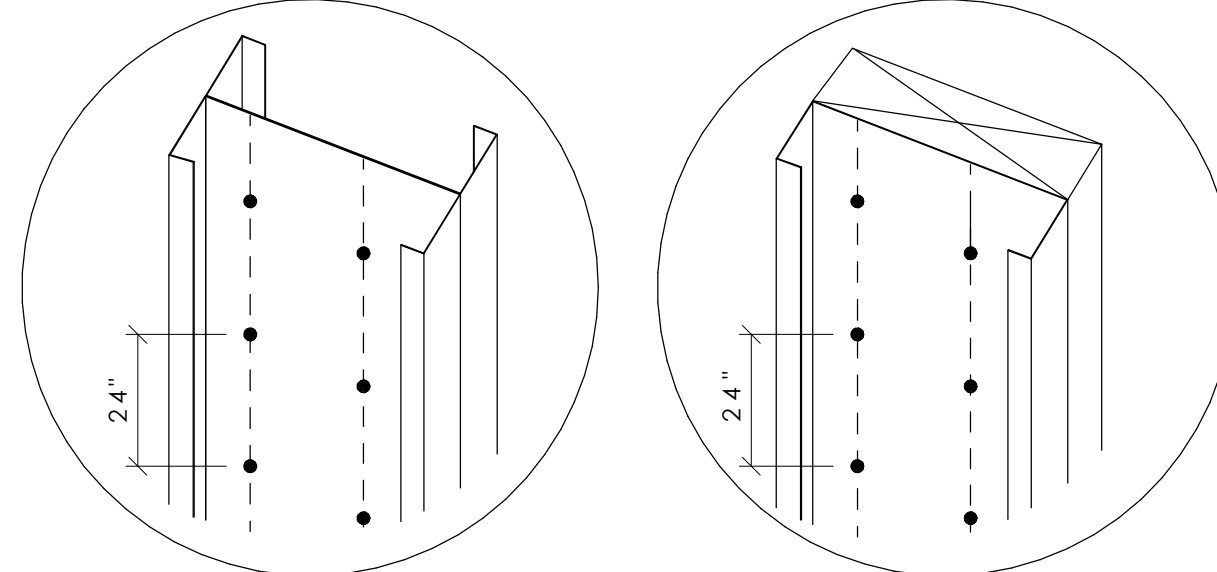
The best practices listed below are based off of customer feedback and RedBuilt's observations. These are recommendations only and should be treated as such. Contact the EOR for specific bracing instructions.

#### BEST PRACTICES

- DO NOT LEAVE ANY PANELS UNBRACED.**
- Brace each panel as it is set in accordance with EOR bracing instructions.
- Minimum of two braces per panel is recommended.
- Brace connection capacity should be adequate to transfer all intended loads.
- Braces should be sized to prevent buckling under intended loads
- Do not lap members to create longer braces. This creates eccentric forces which can cause buckling of the braces.
- Secure every panel to the slab/foundation as the panels are placed, following all applicable structural details.
- Install double top plate as the panels are set in accordance with det. 9/R005.
- Complete panel to panel connection per details 3/R005 or 8/R005 as panels are placed.
- If structure is to be left partially complete for a significant period (overnight or weekend) terminate panel installation by completing an external or internal corner to provide additional rigidity.
- Install any pocketed beams and attach them completely as soon as the required panels are installed.
- Install roof trusses, joists, or beams as soon as the exterior panels are complete.

### 8 STEEL PANEL ATTACHMENT

- Attach steel panel to steel panel using 2 evenly spaced rows of #10SMS @24" O.C.
- Attach steel panel and wood panel together using 2 evenly spaced rows of 1/4" SDS screws @24" O.C.

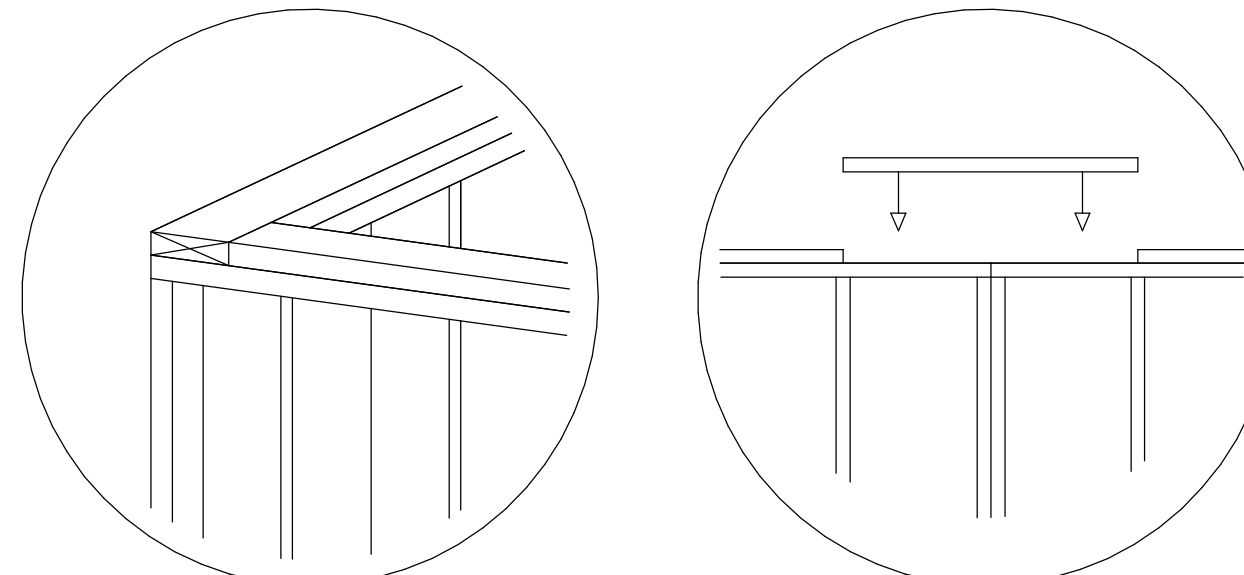


STEEL TO STEEL CONFIGURATION

WOOD TO STEEL CONFIGURATION

### 9 TOP PLATES

- During the installation of the wall panels, upper top plates are to be field installed.
- Top plates are to be lapped at wall intersections.
- Top plates are to be spliced only at stud locations with minimum 4' lap unless noted otherwise by EOR.

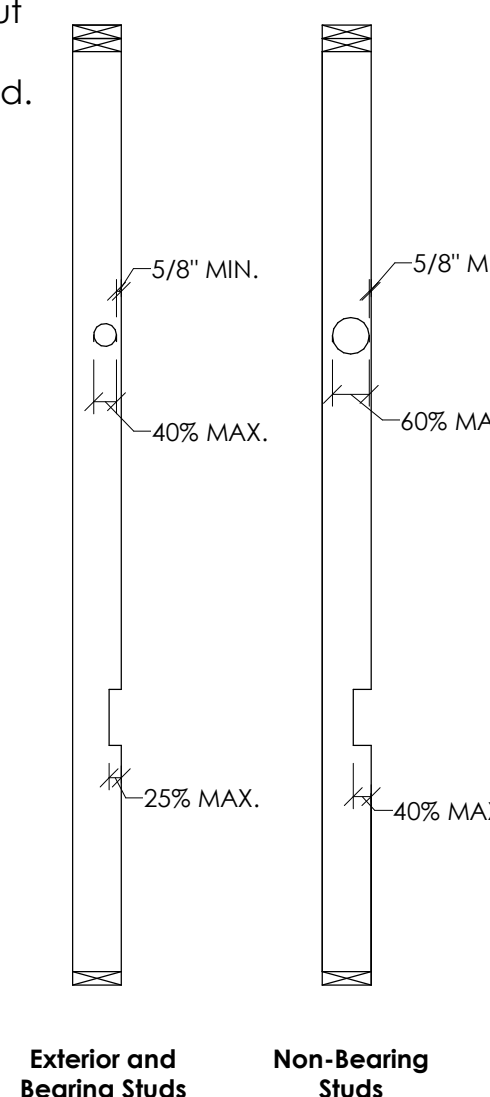


### 10 ALLOWABLE HOLES/NOTCHES

- Do NOT cut, drill, notch or otherwise alter the wall panels beyond the limitations specified in the building code unless such alterations are by the building designer.
- Do NOT drill holes in the same cross section of cut or notch.
- Do NOT drill holes closer than 5/8" of edge of stud.
- Whenever possible, locate cuts, holes and notches in top or bottom third of stud length.

Maximum Notches		
	Exterior and Bearing Partitions	Non-Bearing Partitions
2x4	7/8"	1 3/8"
2x6	1 3/8"	2 3/16"
2x8	1 13/16"	2 7/8"

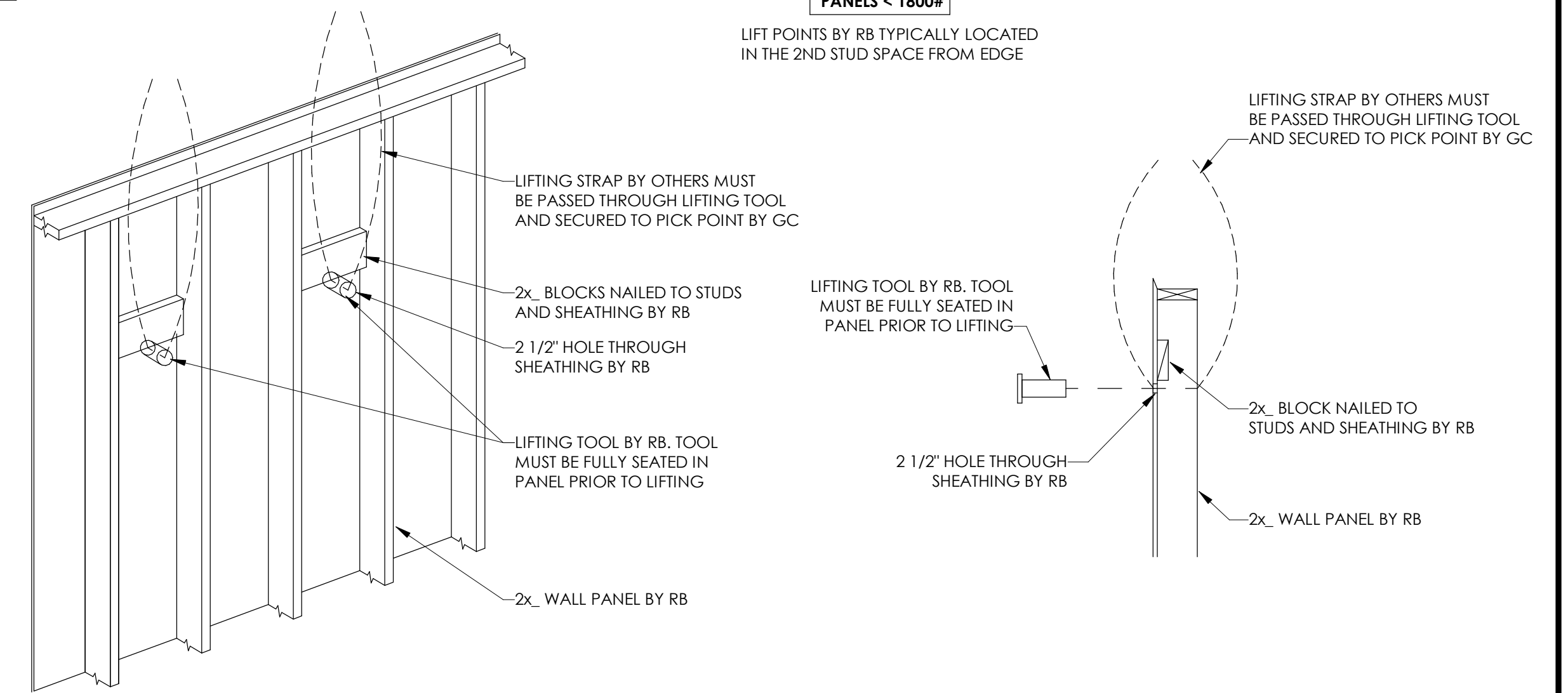
Maximum Hole Sizes		
	Exterior and Bearing Partitions	Non-Bearing Partitions
2x4	1 3/8"	2"
2x6	2 3/16"	3 1/4"
2x8	2 7/8"	4 5/16"



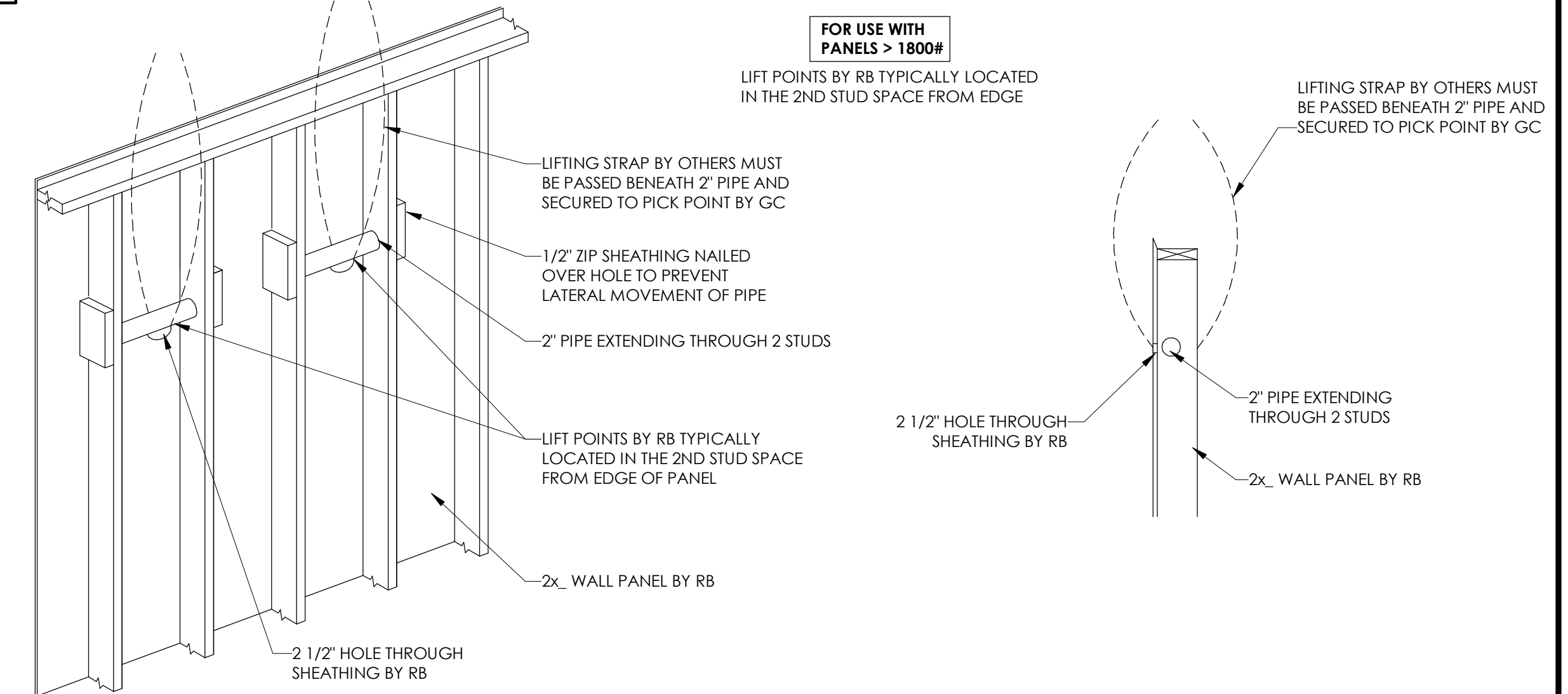
Exterior and Bearing Studs

Non-Bearing Studs

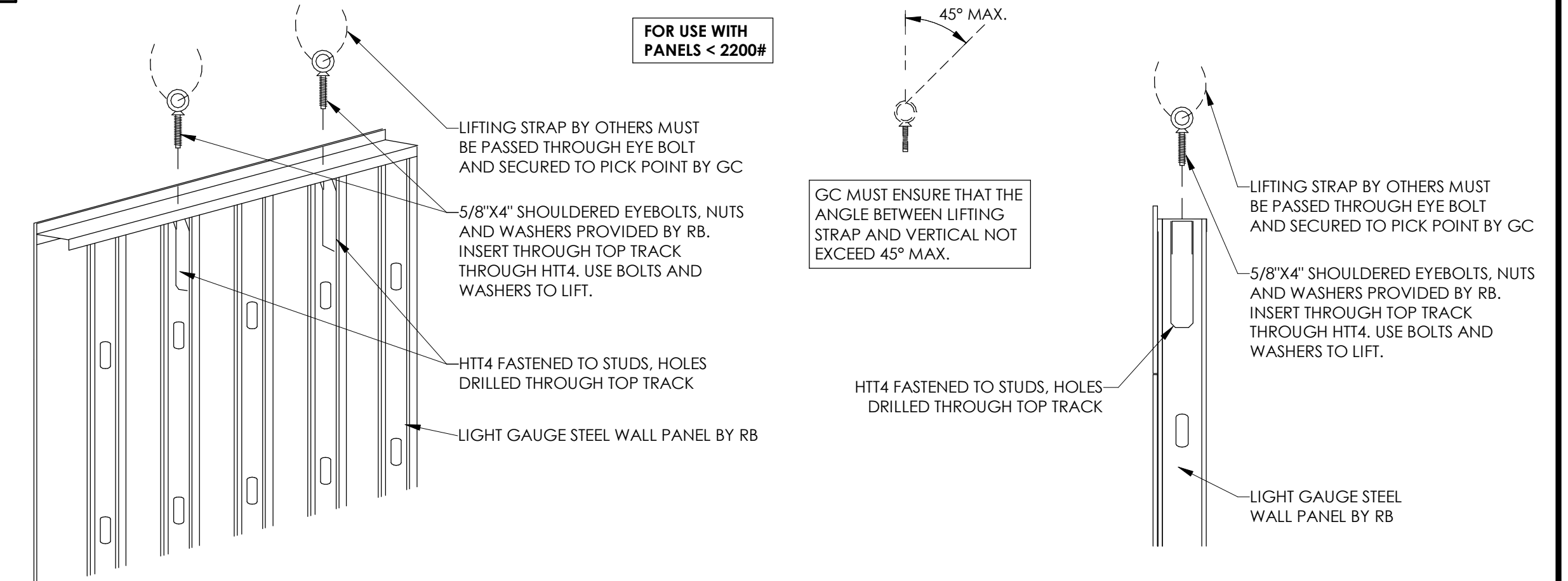
### 11 LIGHT WOOD PANEL LIFTING



### 12 HEAVY WOOD PANEL LIFTING



### 13 LIGHT GAUGE STEEL PANEL LIFTING



For product warranty information please scan the QR code or use the link below to access the form

<https://www.redbuilt.com/ProductWarranty>

**If you have questions or concerns:**  
Call your RedBuilt™ Representative directly, or for general customer service call (866) 859-6757