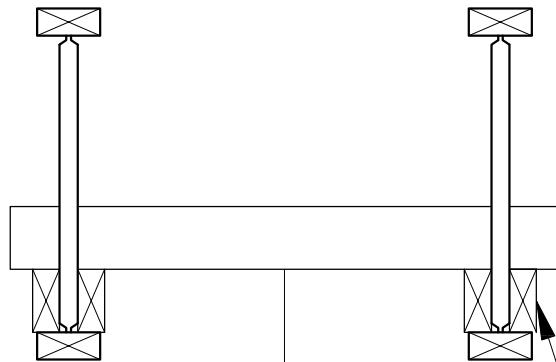


MAXIMUM LOAD AND LOCATION
SHALL BE IN ACCORDANCE WITH
APPROVED TRUSS CALCULATIONS



LOAD

(2) 2x ON EDGE SPANNING A MIN. OF 2 PANEL
POINTS. INSTALL ONE BOLT ABOVE EACH BOTTOM
CHORD PIN TO HOLD 2x's IN PLACE.

