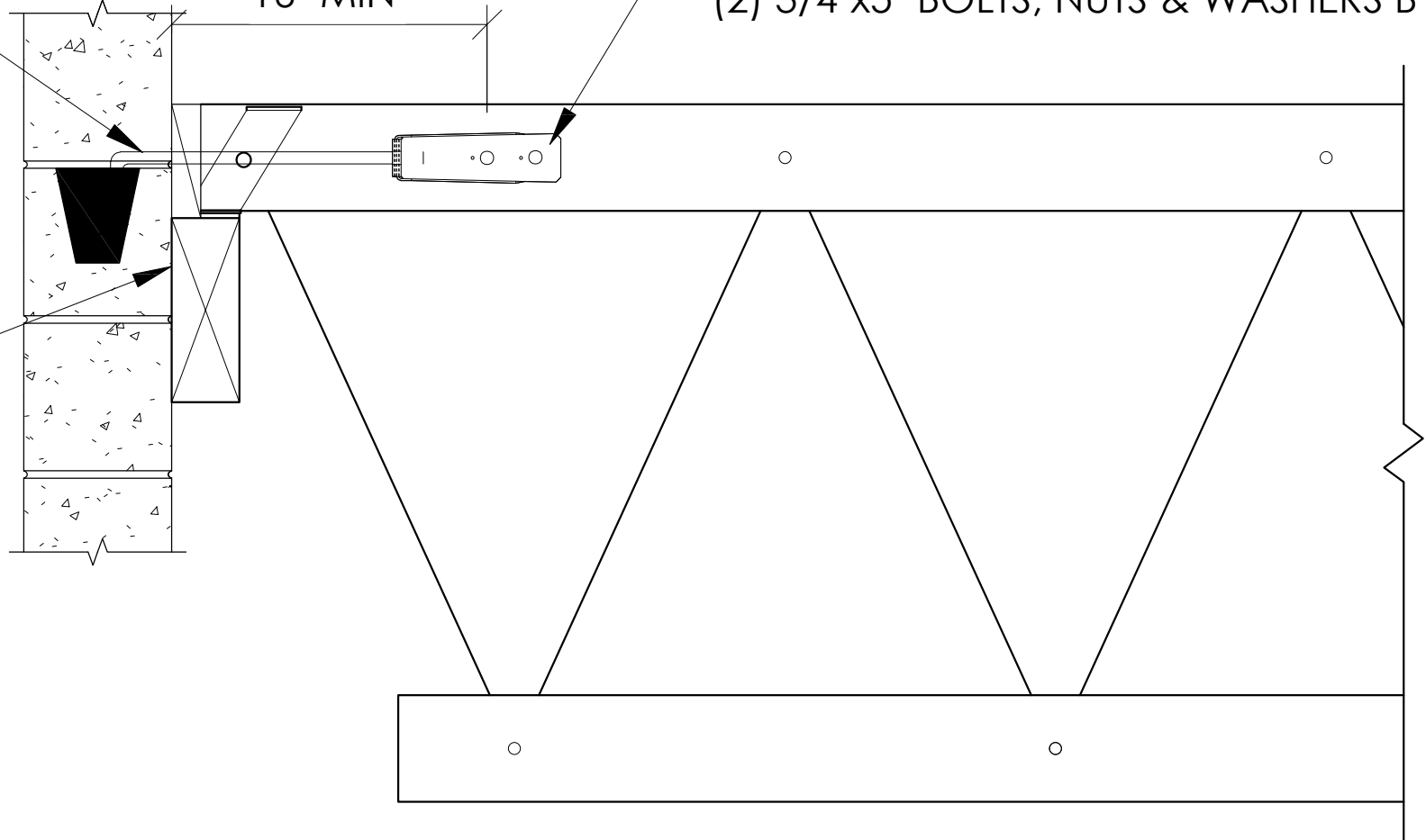


ROD AND
HARDWARE
BY OTHERS

16" MIN

HD5B HOLD DOWN EACH SIDE WITH
(2) 3/4"x5" BOLTS, NUTS & WASHERS BY RB

LEDGER



THE DESIGN PROFESSIONAL OF RECORD IS
RESPONSIBLE FOR THE ROD TO HARDWARE
AND CONCRETE/CMU CONNECTIONS