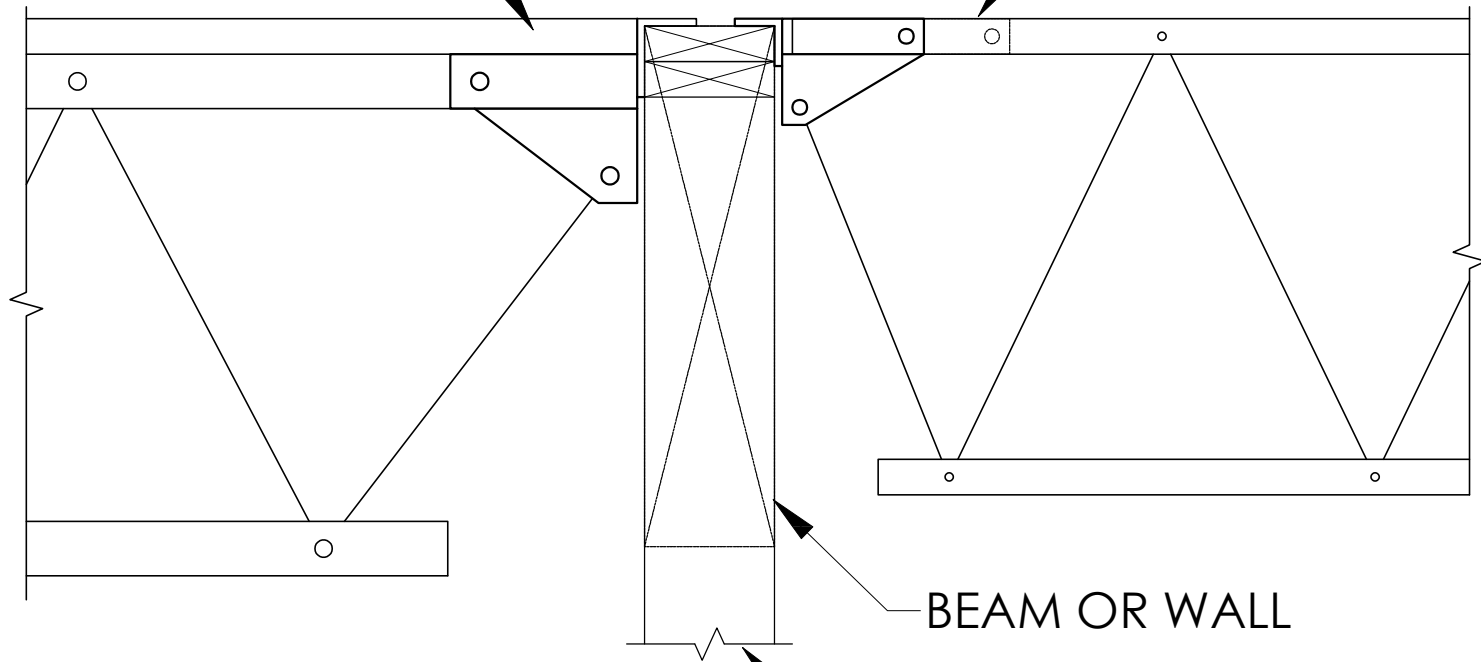


RED-S, RED-M -OR- RED-H
(RED-S SHOWN DROPPED
WITH CAP PLATE)

RED-L -OR- RED-W
(NON-DROPPED TRUSS SHOWN)



MINIMUM BEARING WIDTHS
3 1/2" MIN FOR RED L
4 1/2" MIN FOR RED-S
5 1/2" MIN FOR RED-M
6" MIN FOR RED-H